

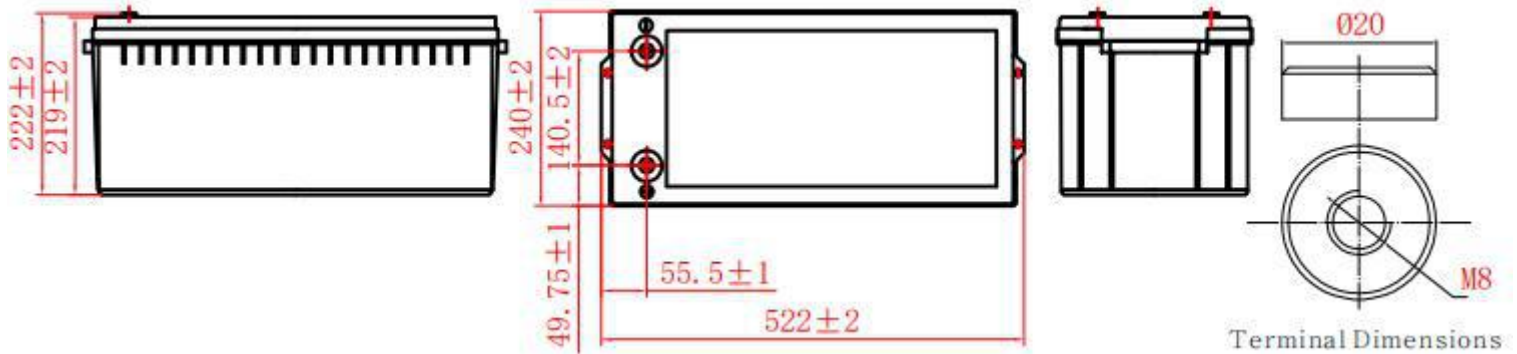
## General Features

- ▶ High corrosion resistant performance: Pb-Ca multi-alloy grid
- ▶ High energy density and power density
- ▶ Optimized capability of instant high-current discharging
- ▶ Excellent charge acceptance ability
- ▶ Excellent deep cycle discharge capability
- ▶ Strong high and low temperature performance
- ▶ Precision sealing technology
- ▶ Long life



**Dimension: 522(L) × 240(W) × 219(H) × 222(TH)**

**Unit: mm**



Specification	
Nominal Voltage	12V
Nominal Capacity	200Ah
Design life	10 years
Terminal	M8
Approx. Weight	Approx 57.0kg (126lbs)
Container Material	ABS
short-circuit current	3000A
Internal resistance(Full charged at 25°C: )	4.0 mΩ
Self discharge	3% of capacity declined per month at 25°C
Operating Temperature	
Discharge:	-20 ~50°C(-4~ 122°F)
Charge :	-20 ~50°C(-4~ 122°F)
Storage:	-20 ~50°C(-4~ 122°F)
Charge Method(25 °C)	
Charge current:	Max. 50A;Recom.20A
Float charge:13.5-13.8V	recom.13.8V(-18mV/ °C)
Equalize charge:13.8-14.1V	recom.14.1V(-24mV/ °C)
Cycle charge:14.4-15.0V	recom.14.7V(-30mV/ °C)

## Standards

Executive standard YD/T 799-2010

## Applications

- ▶ UPS/EPS
- ▶ Power systems
- ▶ Telecommunications system
- ▶ Emergency lighting, Auto control system
- ▶ Solar/wind generating storage cyclic
- ▶ Other general purpose

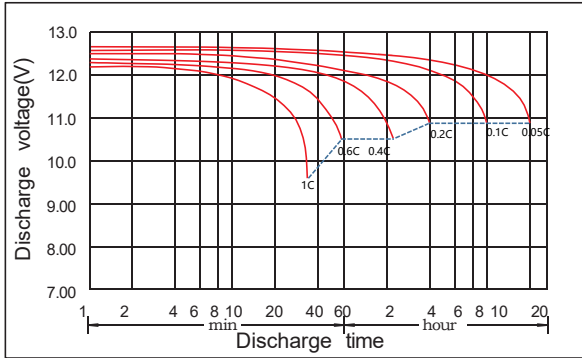
## Rated Capacity

10Hour Rate (20.0A to 10.8V)	200.0Ah
3Hour Rate (54.7A to 10.2V)	164.1Ah
1Hour Rate (135A to 9.6V)	135.0Ah

## Attain Certificate



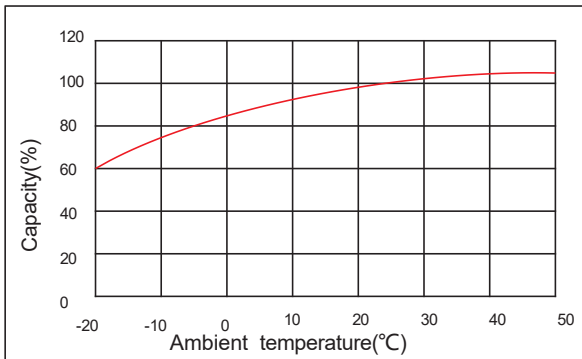
## Discharge characteristic



## Charging characteristic



## The effect of temperature on capacity



## The effect of temperature on float life



## Constant Current Discharge Characteristics Unit:A (25°C,77°F)

FV/Time	5min	10min	15min	30min	45min	1h	1.5h	2h	3h	4h	5h	6h	8h	10h	20h
1.60V	306	306	263	184	159	135	84.8	77.2	56.1	40.6	37.6	30.0	24.7	20.8	10.7
1.65V	301	301	250	181	157	134	84.0	76.8	55.4	40.2	37.3	29.8	24.5	20.6	10.6
1.70V	289	289	247	178	155	133	83.2	76.2	54.7	39.8	36.9	29.4	24.3	20.4	10.4
1.75V	266	266	244	176	154	131	82.4	75.0	54.1	39.4	36.5	29.2	24.1	20.2	10.2
1.80V	238	238	223	169	148	127	81.6	73.7	53.7	39.0	35.4	28.8	23.9	20.0	10.1
1.85V	212	212	202	154	136	118	79.0	70.0	50.6	37.9	33.7	28.0	23.0	19.4	9.84

## Constant Power Discharge Characteristics Unit: W/cell (25°C ,77°F )

FV/Time	5min	10min	15min	30min	45min	1h	1.5h	2h	3h	4h	5h	6h	8h	10h	20h
1.60V	520	520	473	361	312	264	167	152	110	79.9	74.1	59.1	48.9	41.2	21.2
1.65V	512	512	450	354	308	263	165	151	109	79.3	73.4	58.6	48.5	40.9	20.9
1.70V	491	491	445	348	304	261	164	150	108	78.3	72.7	58.0	48.2	40.4	20.6
1.75V	452	452	439	346	301	258	162	148	107	77.7	71.9	57.5	47.7	40.1	20.3
1.80V	404	404	401	331	290	251	161	145	106	76.9	69.8	56.7	47.4	39.6	20.0
1.85V	363	363	361	303	268	234	156	139	100	75.1	66.7	55.4	45.7	38.7	19.7